



## GRAPHIPLAST® News

## -&gt; Intelligent adhesive solution vs. protective wallets

Labels accompanying the material like production papers and shipping labels are frequently generated on paper and protected with label wallets against adverse production environments. Any savings made by using paper for the labels are spent on expensive protective wallets. Condensation water, contamination and high temperatures will damage the data carriers in spite of the elaborate solution and make data difficult to read. Complex requirements for fastening the wallet - adhesive tape, adhesive areas, punched holes, slotted holes for strapping can be transferred directly to the label. A virtually indestructible data carrier creates security and improves functionality at lower cost. In addition, it is no longer necessary to put labels into the wallets and seal them, which can be quite laborious and, for the higher grade wallets, often quite time consuming.



**The Applications:** *Steel strip coils + plate bundles, containers, Odette*

**Your Benefit:** *Two become one - improved functionality - lower cost*

**Information:** (305) 867-6161 [Harri@Steeltags.com](mailto:Harri@Steeltags.com)

## -&gt; GRAPHIPLAST® 7177 - Adhesion to sensitive metal surfaces

Automated material flow control and warehouse management depend on barcode labels that are fully legible. The identification must be positioned accurately and be perfectly legible. For stainless steel sheets it is also a requirement that the surface must not be contaminated by glue residue or discoloration. The AA-20-303 adhesive, in combination with GRAPHIPLAST® 7177 enables a firm bond on sensitive, achromatized, brushed and lacquered steel surfaces and does not leave any residue when the label is removed.



**The Applications:** *Manufacture, conversion and processing of high-quality sheets*

**Your Benefit:** *Secure identification without residue.*

**Information:** (305) 867-6161 [Harri@Steeltags.com](mailto:Harri@Steeltags.com)

## -&gt; GRAPHIPLAST® labels for laser printers

The ideal label for laser printers would be a combination of the robustness of plastic and the processing properties of paper in the printer until now wishful thinking. Restrictions are here mainly imposed by the stacking of sheets after printing, resulting in a static charge and high temperatures during toner fixing. GRAPHIPLAST® 7297 is the result of seven years of S+P experience with plastic labels for laser printers. The new, improved version meets all the requirements for applications with high printing volumes. **The Applications:** *Plastic data carriers and sheets for laser printers.* **Your Benefit:** *The application that runs by itself - 500 sheets can be printed unsupervised with perfect stacking - sorted sheet by sheet.* **Information:** (305) 867-6161 [Harri@Steeltags.com](mailto:Harri@Steeltags.com)



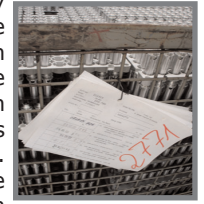
## -&gt; Process control in aggressive cleaning baths

Avoiding material mix-ups is one of the priorities for quality management. Suppliers of car body parts to the automotive industry use containers with sheet metal parts that run through degreasing and cleaning processes. Removing identification before the bath means additional work. It also poses a residual risk when materials are being allocated after the process as sometimes several containers go through the process at the same time. GRAPHIPLAST® 7268 as a work flow document accompanying the material has a high resistance to acids, alkali and oil in high concentrations. It can therefore withstand all known cleaning and degreasing baths as well as subsequent drying processes in hot air up to 200°C / 400°F

**The Applications:** *Steel processing, e.g. metal forming, high precision parts etc.*

**Your Benefit:** *Secure processes - ISO compliant material traceability*

**Information:** (305) 867-6161 [Harri@Steeltags.com](mailto:Harri@Steeltags.com)



## -&gt; Partial application of adhesive offers more options

The identification of stacked sheet metal or sheet metal coils with sensitive surfaces requires labels with a firm bond. These labels enable good fixing to the strap. For this type of application it is important that the part of the label that protrudes over the edge of the strap is free from glue, to avoid any transfer of adhesive onto the surface. Partial application of adhesive is an established technology, which, until now, could only be used in a limited way for high-strength, permanent adhesives. The S+P solution, the PK-80-601 adhesive, has both extremely high bond strength and it can be applied partially. An ideal solution for applications where the glue has to be applied precisely to a specific, small area and where high adhesive strength has to be combined with adhesive application in selected areas.

**The Applications:** *Strap identification without wallet, adhesive Odette tags*

**Your Benefit:** *An all-round talent for material flow control*

**Information:** (305) 867-6161 [Harri@Steeltags.com](mailto:Harri@Steeltags.com)



## -&gt; GRAPHIPLAST® 7268 for automatic strapping

The automation of simple operational processes is continuing. The application of tags by machine can also be implemented easily. Especially for bundle marking applications where strapping is available for attachment. With metal plates and high temperature self-adhesive labels for applications to 400 °C/ 850 F or plastic tags with slot punchings for bundles, fully automatic solutions are possible. In particular, GRAPHIPLAST® 7268 and 7078 are the ideal materials for the automatic threading through of the strap due to their robustness and flexural rigidity. A special type of slot (dog bone) ensures high tear strength and thus guarantees a secure identification for shipping worldwide.

**The Applications:** *Tubes, profiles, steel bars and hot or cold-rolled strips*

**Your Benefit:** *Rationalisation effect by eliminating a manual process*

**Information:** (305) 867-6161 [Harri@Steeltags.com](mailto:Harri@Steeltags.com)



**-> Storage location identification for difficult environments**

The organisation and/or identification of storage locations for stock management and commissioning of materials do not usually place special demands on labels. However, for identification applications outdoors or barcode reading over long distances conventional technology soon reaches its limits. Special label materials enable solutions that make direct recording of material movements via bar code secure.



**The Applications:** Bar code logging over great distances and under variable light conditions. **Your Benefit:** Secure identification!  
**Information:** (305) 867-6161 [Harri@Steeltags.com](mailto:Harri@Steeltags.com)

**-> Printer test pool extended**

When selecting a suitable printing technology in a production environment and for new applications, more parameters become important which often cannot be evaluated beforehand. A potential customer from Switzerland wanted to carry out tests over several weeks under real conditions, with both thermal transfer and laser printers, to include his employees in the decision making process. In order to be able to offer this exemplary approach, we have extended our pool of test printers because satisfied users are our best references.



**The Applications:** Different printing systems can be used.  
**Your Benefit:** Choose safely by testing under real conditions.  
**Information:** (305) 867-6161 [Harri@Steeltags.com](mailto:Harri@Steeltags.com)

**-> Individual labels sizes for laser printers**

New developments in laser printing technology continually increase the range of applications. Printers used to be primarily designed for US letter size applications, today, however, they are more flexible and can be adjusted to different sizes. As a Lexmark partner we offer paper trays that are continuously adjustable to different format sizes. The printer configuration in the driver allows the definition of any format.



**The Applications:** Form organisation and label printing in general  
**Your Benefit:** Flexible solution for different applications - all in one  
**Information:** (305) 867-6161 [Harri@Steeltags.com](mailto:Harri@Steeltags.com)

**-> New ribbons for thermal transfer printing save money**

Ongoing new developments in ribbons for thermal transfer printers blur the lines between the different quality levels. S+P has added a new ribbon to their range which produces a relatively scratch resistant print for coated labels at low cost.



**The Applications:** Thermal transfer printed labels for medium duty use  
**Your benefit:** Low-cost tt-printing for industrial applications.  
**Information:** (305) 867-6161 [Harri@Steeltags.com](mailto:Harri@Steeltags.com)

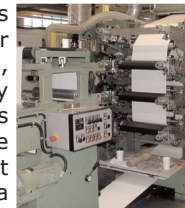
**-> Introducing new S+P agents - Specta AG**

Success doesn't just come by chance! Playing an important part just like the Seidl + Partner employees, our partners in our world markets are also helping to generate our success. Specta AG, a specialist for packaging and strapping technology, has been the S+P partner for the CIS market since the year 2000. The owner and CEO Eric Helin (on the right in the photograph), with his keen eye had recognized immediately at the first meeting at an exhibition that there are synergies between packaging and identification. Experience and industry know how were the ideal prerequisite for the joint building up of the CIS market.



**-> Recycling GRAPHIPLAST®**

Seidl + Partner's trade mark GRAPHIPLAST® stands for various special films. Plastic is a precious raw material! It is therefore our aim to reintroduce waste that is generated during label processing, back into the production cycle. Unmodified plastics are already being reprocessed to plastics as far as today's technology allows and mixed films are recycled thermally. Reducing waste is the overall aim which is also considered as the environmental aspect when new materials are being developed. The introduction of a production reward in 2002 also had the objective to save precious materials and to manufacture economically. This is not least a contribution to environmental management, to save natural resources and to meet our responsibility. **Information:** (305) 867-6161 [Harri@Steeltags.com](mailto:Harri@Steeltags.com)



**S+P Intelligent Tag Attachment Ideas**

